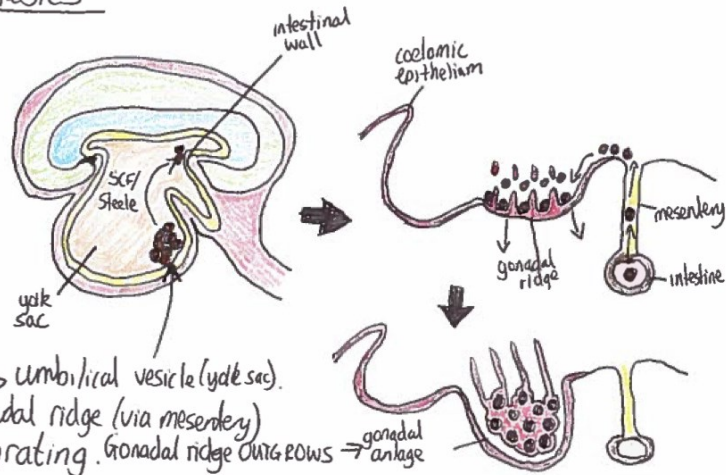
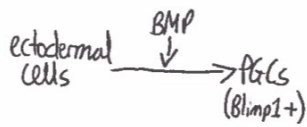


Development of the Testes

1. Indifferent stage:

Specification of Primordial Germ Cells (PGCs):



EMIGRATE from ectoderm \rightarrow umbilical vesicle (yolk sac).
Then from there \rightarrow gonadal ridge (via mesentery)
PROLIFERATE while migrating. Gonadal ridge OUTGROWS \rightarrow

Testes Morphogenesis: SRY



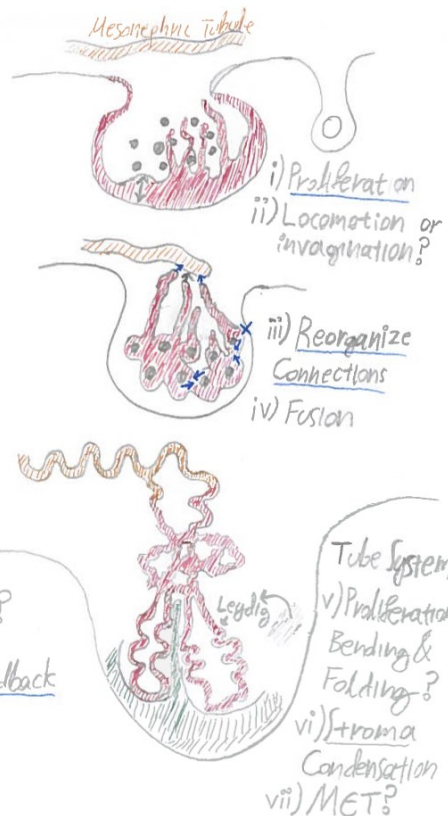
Differentiation to Sertoli: Deterministic for Morphogenesis

Gonadal Cords reorganize connections, detaching from epithelium & engulfing PGCs

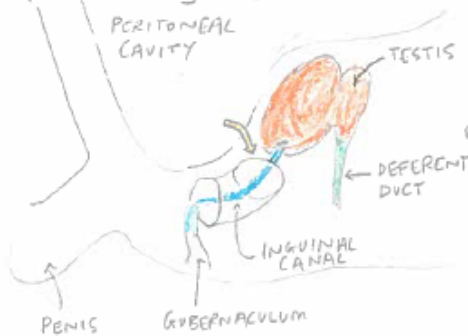
Cords converge & fuse, forming rete testis.
Non-sprouting mechanism to form tube system

Stroma $\xrightarrow{\text{condensation}}$ tunica Albuginea
Protect & segment

Leydig Cells recruited from Mesenchyme MET?



3rd month: after the mesonephros ATROPHIES, the gubernaculum forms.
Peritoneum EVAGINATES to form the processus vaginalis



7 months: enters inguinal canal
9 months: testis enters scrotum (97% of full-term infants)

Gubernaculum contracts and body grows. Testis thereby pulled into scrotum, whilst being guided by the processus vaginalis

CHECK OUT THE QUIZZES AT EMBRYOLOGY.CH/ANGLAIS/GENITAL/QUIZGENITAL.HTML!