

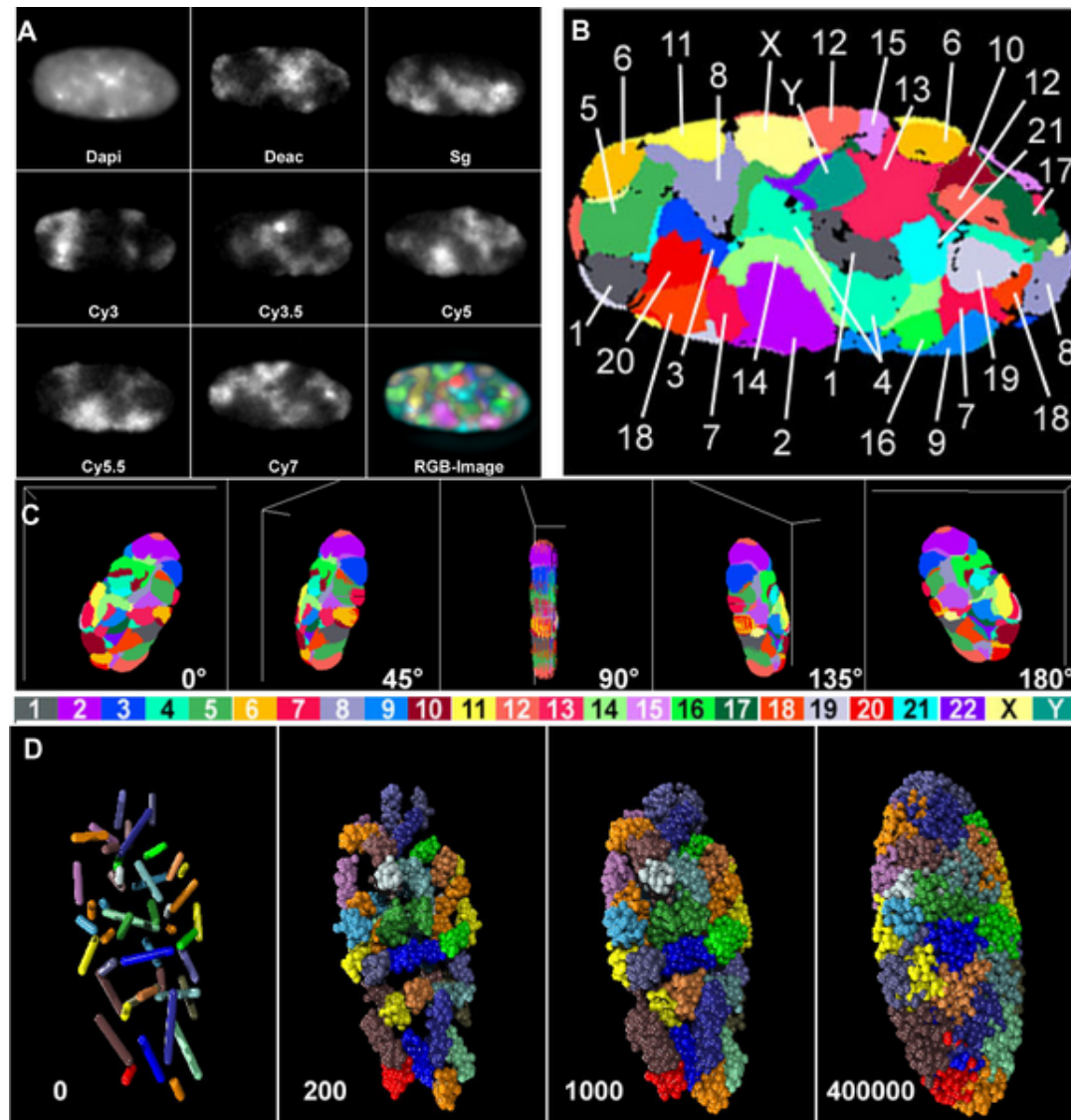
NETs promote movement of whole chromosomes

(b) FISH with chromosome 5 paint on NET transfected HT1080 cells lacking a lacO array validated the lacO screen results.

Zuleger *et al.* *Genome*

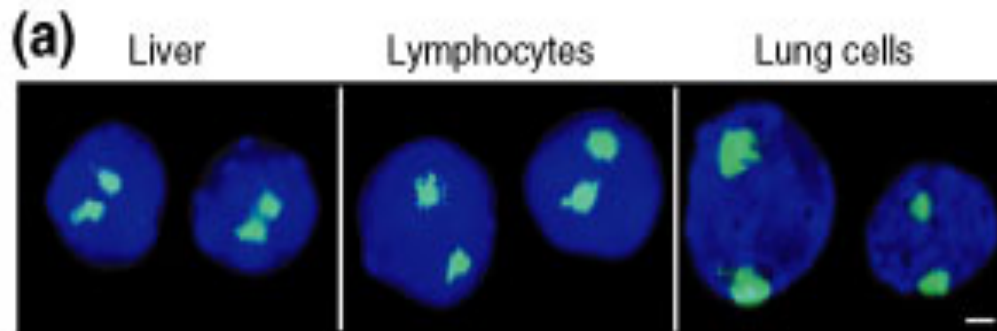
Biology 2013 **14**:R14 doi:10.1186/gb-2013-14-2-r14

Figure 1. 24-Color 3D FISH Representation and Classification of Chromosomes in a Human G0 Fibroblast Nucleus



Bolzer A, Kreth G, Solovei I, Koehler D, Saracoglu K, et al. (2005) Three-Dimensional Maps of All Chromosomes in Human Male Fibroblast Nuclei and Prometaphase Rosettes. *PLoS Biol* 3(5): e157. doi:10.1371/journal.pbio.0030157
<http://127.0.0.1:8081/plosbiology/article?id=info:doi/10.1371/journal.pbio.0030157>

Figure 1.



Tissue-specific radial positioning of chromosomes. **(a)** FISH analysis of chromosome 5 (green) in liver, lymphocytes and lung cell nuclei. DNA counterstaining with DAPI is in blue. Chromosome 5 is preferentially enriched in the nuclear interior in liver, within the medial nuclear subvolume in lymphocytes, and at the nuclear periphery in lung cells. Scale bar, 2 μm .

Parada *et al.* *Genome Biology* 2004 **5**:R44 doi:10.1186/gb-2004-5-7-r44